

CITY TERRACE



Tel: +357 25 731111

Free call: 80008384

www.cypruspropertygallery.com



VIBRANT & EXCITING

The City Terrace Residence combines state-of-the-art architecture with innovative design, artistic, contemporary styling and unparalleled luxury.

A serene haven in the very heart of the city, built and designed for individuals seeking to combine luxury lifestyle and urban living.



INFINITE POSSIBILITIES

Spread over 6 floors and offering 27 apartments for sale. Apartments vary from 1, 2 & 3 bedrooms up to spectacular three bedroom penthouses.



INTERIORS

All residences enjoy spacious open plan interiors co-ordinated ambience depicting a modern lifestyle. Open plan galley kitchen/living room and en-suite bedrooms with vistas around the city.











APARTMENT FEATURES :

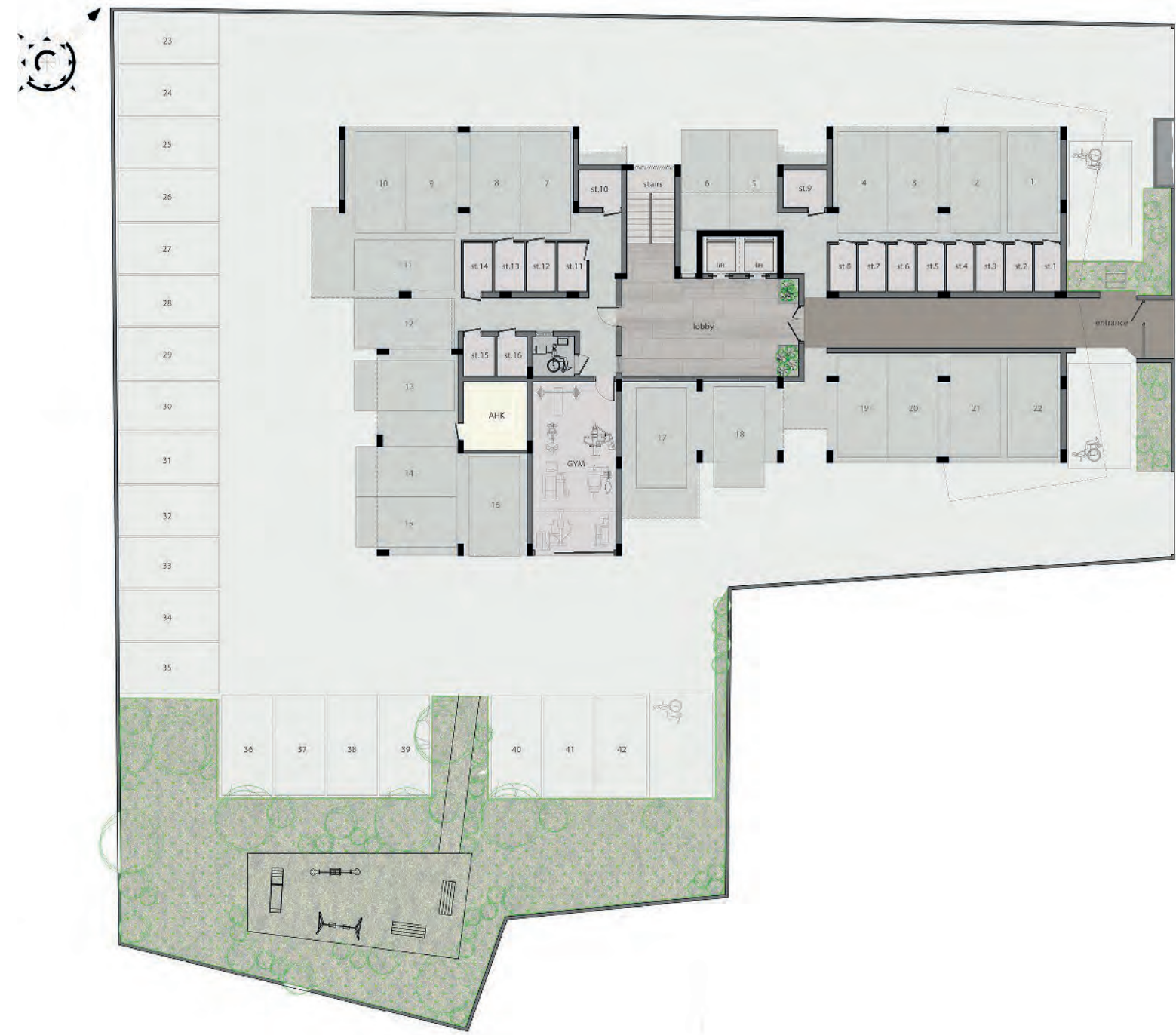
- Under floor Central Heating
- Bespoke Designed Kitchens & Wardrobes
- Granite Worktops
- Porcelain flooring
- Sanitary Ware (Roca)
- Mixers & taps (Grohe)
- Fly Screens on Windows & Patio Doors
- Decorative ceilings with hidden lighting
- Pressurized Water System
- Pipe in Pipe plumbing System
- Solar Panel Water Heating
- Thermal Insulation throughout (extruded polystyrene)

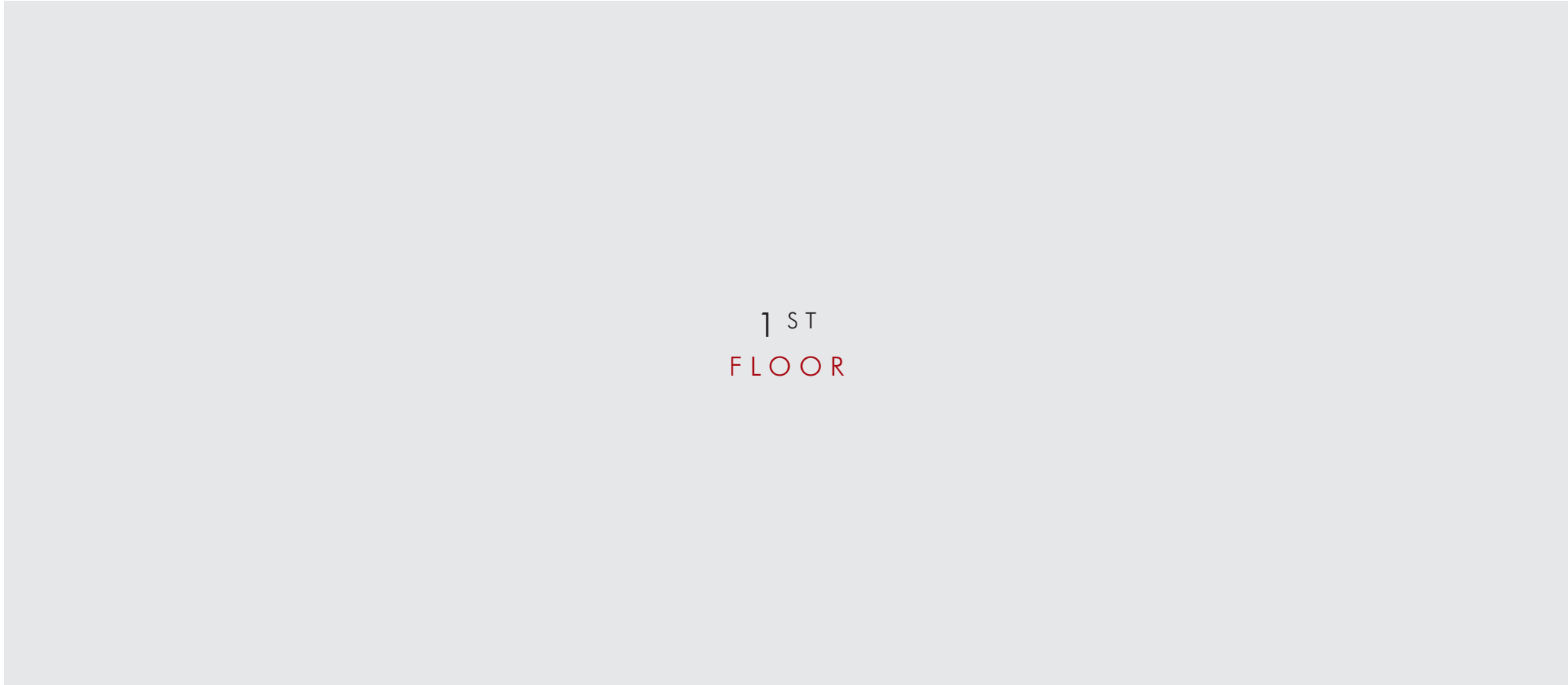


AMENITIES :

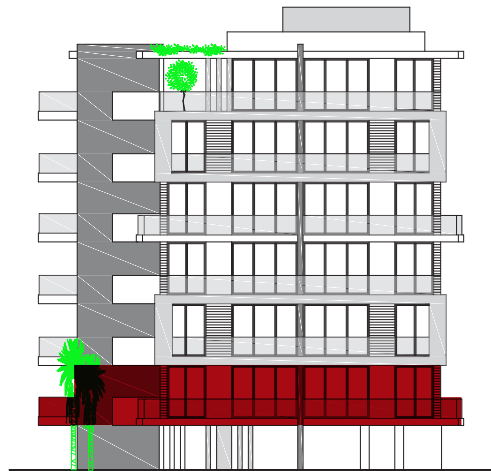
- Gated Secured Complex
- CCTV for all Common Areas
- Security Door
- Video Phone Entry System
- Luxury entrance Lobby
- Decorative Architectural LED lighting for Common Areas
- Fully Landscaped Garden areas
- Private Secured Parking for residents

GROUND
FLOOR



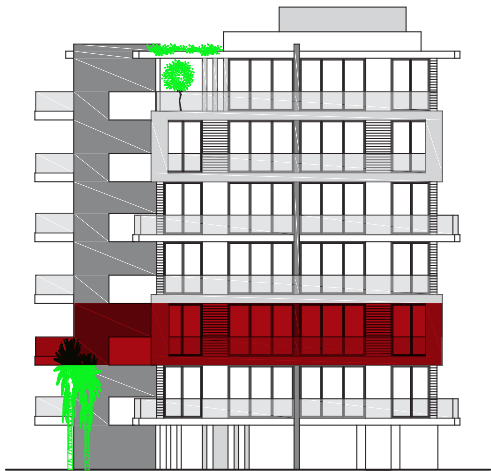


Apartment No.	101	102	103	104	105
Bedrooms	2	2	1	3	2
Covered Indoor Area M ²	88.00	88.21	54.36	116.00	88.32
Covered Veranda Area M ²	26.00	26.02	9.81	27.30	20.80
Un-Covered Veranda M ²	-	-	-	-	-
Common Area M ²	13.60	13.64	8.40	17.93	13.65
Total Covered Area M ²	127.60	127.87	72.57	161.23	122.77
Parking Spaces	1	1	1	1	1





Apartment No.	201	202	203	204	205
Bedrooms	2	2	1	3	2
Covered Indoor Area M ²	87.58	88.21	54.36	116.00	88.83
Covered Veranda Area M ²	27.85	28.68	9.81	27.30	20.80
Un-Covered Veranda M ²	-	-	-	-	-
Common Area M ²	13.54	13.64	8.40	17.93	13.73
Total Covered Area M ²	128.97	130.53	72.57	161.23	123.36
Parking Spaces	1	1	1	1	1



3RD FLOOR

Apartment No.	301	302	303	304	305
Bedrooms	2	2	1	3	2
Covered Indoor Area M ²	87.58	88.21	54.36	116.00	88.32
Covered Veranda Area M ²	27.99	28.62	9.81	27.30	20.80
Un-Covered Veranda M ²	-	-	-	-	-
Common Area M ²	13.54	13.64	8.40	17.93	13.65
Total Covered Area M ²	129.11	130.47	72.57	161.23	122.77
Parking Spaces	1	1	1	1	1



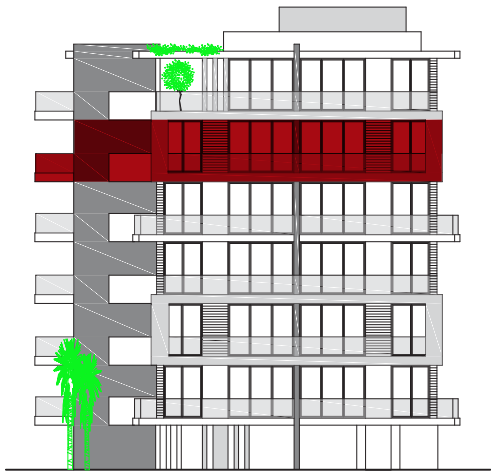
4TH
FLOOR

Apartment No.	401	402	403	404	405
Bedrooms	2	2	1	3	2
Covered Indoor Area M ²	87.58	88.21	54.36	116.00	88.32
Covered Veranda Area M ²	25.41	26.02	9.81	27.30	20.80
Un-Covered Veranda M ²	-	-	-	-	-
Common Area M ²	13.54	13.64	8.40	17.93	13.65
Total Covered Area M ²	126.53	127.87	72.57	161.23	122.77
Parking Spaces	1	1	1	1	1



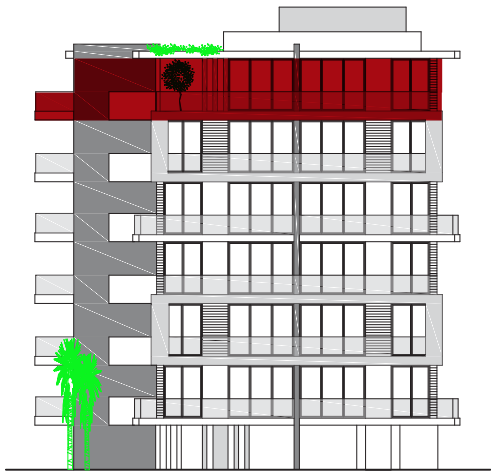


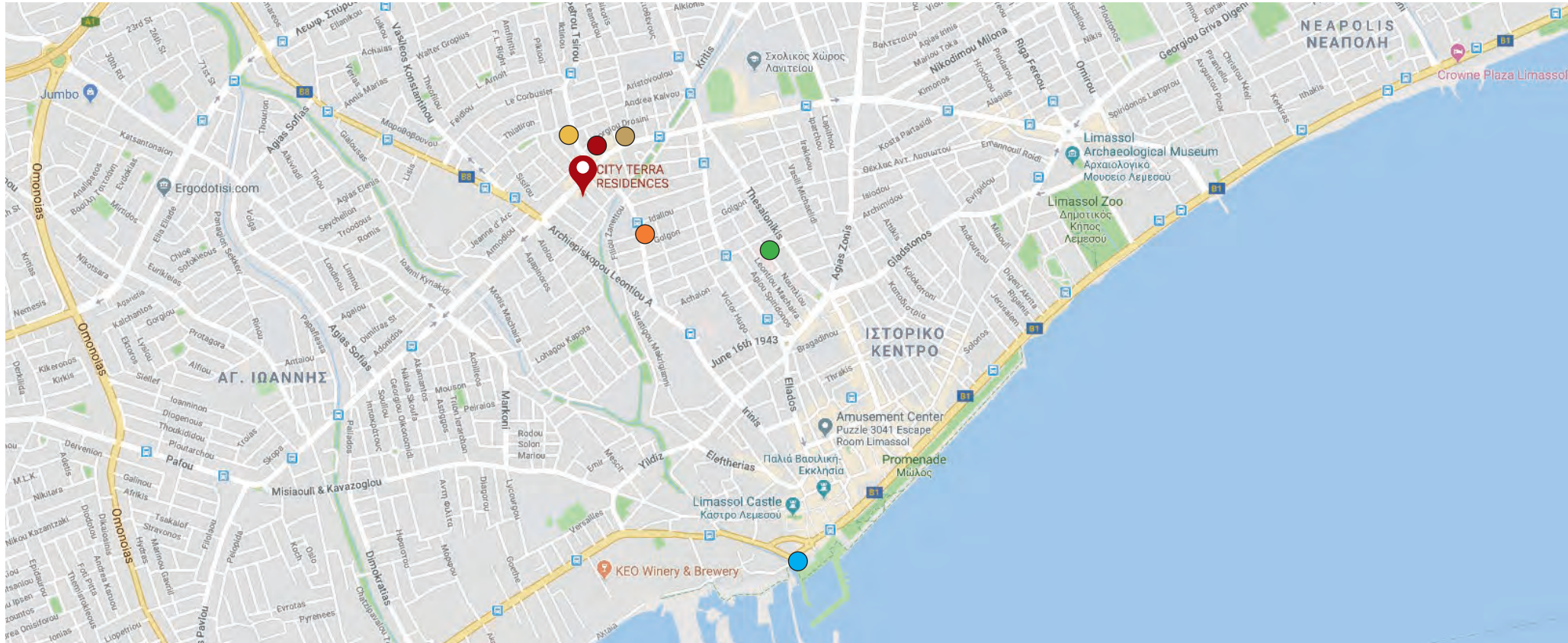
Apartment No.	501	502	503	504	505
Bedrooms	2	2	1	3	2
Covered Indoor Area M ²	87.58	88.21	54.36	116.00	88.00
Covered Veranda Area M ²	27.85	28.68	9.81	27.30	20.80
Un-Covered Veranda M ²	-	-	-	-	-
Common Area M ²	13.54	13.64	8.40	17.93	13.60
Total Covered Area M ²	128.97	130.53	72.57	161.23	122.40
Parking Spaces	1	1	1	1	1



6TH
FLOOR

Apartment No.	601	602
Bedrooms	3	3
Covered Indoor Area M ²	126.87	125.99
Covered Veranda Area M ²	55.09	55.49
Un-Covered Veranda M ²	108.00	64.38
Common Area M ²	19.61	19.48
Total Covered Area M ²	201.57	200.96
Parking Spaces	1	1





LOCATION

City Terrace Residence located in the heart of Limassol City Centre just a short walking distance away from almost everything you could imagine –in one of the most vibrant and exciting cities in the Cyprus.

POINTS OF INTEREST

- 📍 City Terrace Residence
- Banks - approx. 100m
- Schools - approx. 270m
- Supermarkets - approx. 670m
- Medical Center - approx. 700m
- Coffee shops, restaurants - approx. 250m
- Limassol Marina - approx. 1.7km



WHO WE ARE

Stylianides Group was established in 1997 by Christoforos C. Stylianides, a qualified Architect and Civil Engineer. The Group has since grown to become one of the most respected Construction & Development Company's in Cyprus today.

The Group consists of dedicated Companies specializing in their field of expertise and covers every aspect of the Real Estate Industry. Specializing in design & development, construction & engineering, interior & landscape design, marketing & sales, consulting & project management of Commercial & Residential Projects.

OUR PHILOSOPHY

Total commitment and dedication to offering the best quality of products and highest standard of service.

- **quality:** offering the best possible products and services to all our clients.
- **integrity:** honesty and respect in all our dealings, building long term relationships with our clients and associates
- **dedication:** professional approach, understanding our clients, implementing new ideas & innovations



PROJECT MANAGERS
ARCHITECTS & ENGINEERS SALES &
MARKETING

Property Gallery Developers and Constructors Ltd

OWNERS

Landshire Developers Ltd

WORKSHOP



1, Georgiou A' Monastiraki center, Office 3/4/5
4040 Limassol, Cyprus, P.O.Box 52309, 4063 Limassol, Cyprus
T. 8000 83 84 | T. +357 25 731111
sales@cypruspropertygallery.com

Whilst all care has been taken,
the information contained herein
is for indicative purposes and a
guide only and does not constitute
an offer, warranty or contract. All
computer generated images and
representations are indicative only.
Changes may be made during the
further planning or development
stages; and thus subject to change
without notice. E & O.E.

www.cypruspropertygallery.com